

WESTLAKE UNIVERSITY UNDERGRADUATE ADMISSIONS FALL 2026





EXPLORE THE FUTURE BY THE LIGHT OF STARS

ADVANCE CIVILIZATION
BY EXPANDING THE BOUNDARIES OF KNOWLEDGE



WESTLAKE UNIVERSITY

BEYOND THE FRONTIERS OF KNOWLEDGE

▲ Yungu Campus: 246 acres



| Yigong Shi |

Chair Professor and President of Westlake University
Academician of the Chinese Academy of Sciences
Foreign Associate of the
United States National Academy of Sciences
Honorary Foreign Member of the American Academy
of Arts and Sciences

We envision that, in ten or twenty years, Westlake University stands in Hangzhou, Zhejiang as a world-renowned institution of higher education that is founded and well-integrated in China. Here, Westlake University hosts some of the most outstanding scientists in the world, nurtures the best young talent, engages them in cutting-edge basic and applied research, searches for the optimal organization and practice for research and education most suitable for China, and serves as a powerful driving force to promote sustainable high-tech development, and ultimately contributes to the world civilization in ways that are worthy of the Chinese nation!

ABOUT WESTLAKE

Westlake University is a research university with a strong emphasis on fundamental scientific research and cutting-edge technological innovation in Hangzhou, China.

We are making pioneering research breakthroughs and advancing the frontiers of knowledge by inspiring the next generation of leaders in science and engineering from diverse cultures through world-class research, international collaboration, and academic programs taught in English.



Westlake University (Yunqi Campus)



Westlake University (Yunqi Campus)



Excellence **Refinement** **Research-Oriented**

JOIN INSPIRING PEOPLE AT WESTLAKE

5,000

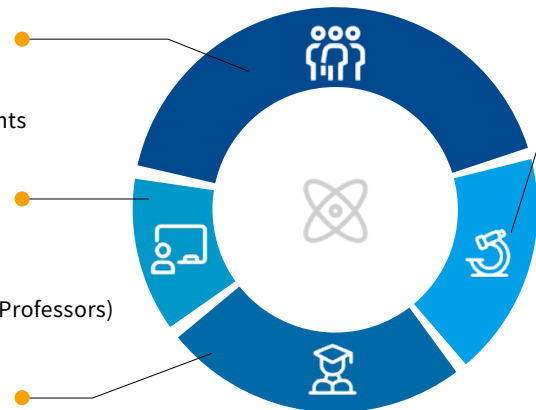
- 3,000 Doctoral students
- 2,000 Undergraduate students

300

- Assistant Professors
- Associate Professors
- Professors (including Chair Professors)

900

- Postdoctoral Fellows



(By 2030)

600

- Research staff
- Teaching faculty
- Platform technicians
- Administrative staff



Chair Professor Profiles



Principal Investigator Profiles



Academics

SCHOOL OF ENGINEERING

SCHOOL OF SCIENCE

SCHOOL OF LIFE SCIENCES

SCHOOL OF MEDICINE

(Newly Established)

PH.D. IN BIOLOGY

BIOLOGICAL SCIENCES

PH.D. IN ELECTRONIC SCIENCE AND TECHNOLOGY

ARTIFICIAL INTELLIGENCE

ELECTRONIC & INFORMATION ENGINEERING

MATERIALS SCIENCE & ENGINEERING

PH.D. IN MATHEMATICS

PH.D. IN PHYSICS

PH.D. IN CHEMISTRY

MATHEMATICS AND APPLIED MATHEMATICS

PHYSICS

CHEMISTRY

DEGREE PROGRAMS

RESEARCH OPPORTUNITIES FROM DAY 1

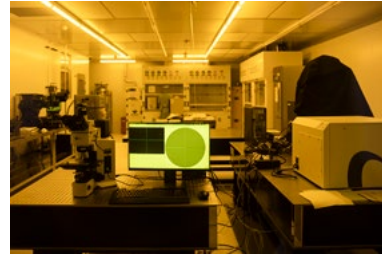
All undergraduate students will get an early start on research careers in ~200 state-of-the-art independent labs across different disciplines.



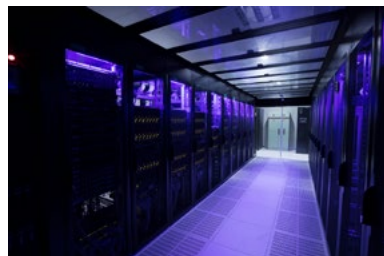
Biomedical Research Core Facility



Laboratory Animal Resource Center



Westlake Center for Micro/Nano Fabrication



Westlake University Supercomputer Center



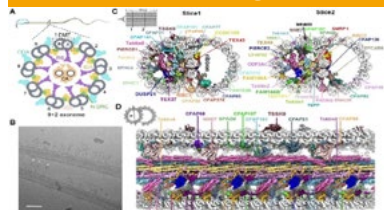
Instrumentation and Service Center for Physical Sciences



Instrumentation and Service Center for Molecular Sciences

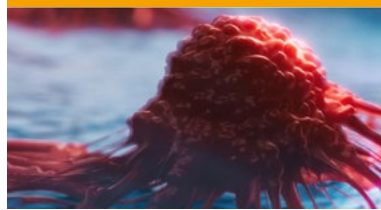
UNLOCK NEW DISCOVERIES

Good Health & Wellbeing



Structural Biologists Identified a New Type of Male Infertility

Treatment & Cures for Diseases



Evidence in Mice That Bacteria in Tumors Help Cancer Cells Metastasize

Energy & Sustainable Environment



World's First Biomimetic Submersible to Dive to 2,000 Meters

Innovative Materials Research



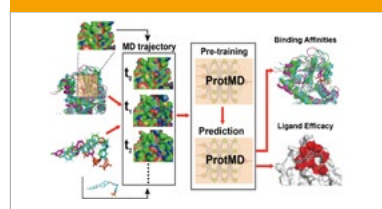
Ruihua He's Team Discovers the First Photocathode Quantum Material

Advanced Manufacturing



Groundbreaking Achievement in VR Interaction

AI for Science



Pre-training of AI Models with Conformation Flexibility for Drug Binding

UNDERGRADUATE EDUCATION HIGHLIGHTS



1:1
Advisor for all students



200
State-of-the-art independent labs

>90%
Professors originating from prestigious global universities



100%
Undergrad students study abroad in the USA, UK, Canada, Australia, etc.

7 Robust undergrad programs in Science, Engineering, and Life Sciences

中文 Acquire Mandarin skills

100%
Admitted international students received scholarships/financial aid



~40
Countries/regions represented on campus



Courses are taught in English



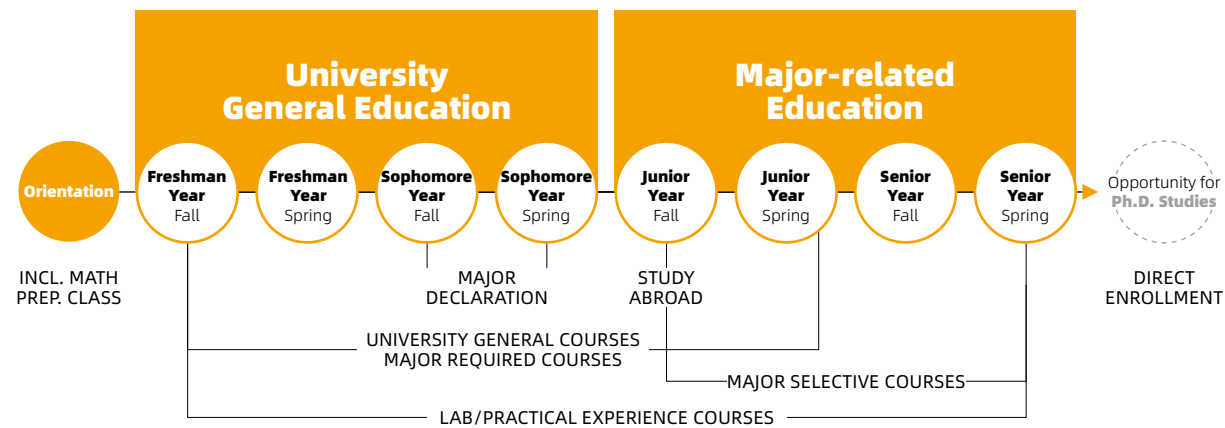
Opportunity for direct enrollment from undergrad to Ph.D. studies



UNDERGRADUATE STORIES

ACADEMIC ROADMAP

At Westlake, you receive an education that balances breadth and focus. Our interdisciplinary core curriculum, following a liberal arts model, sparks academic interest before declaring a major at the end of their third semester.



Fall August-January/February **Spring** February-June Dates vary each year because the Chinese New Year follows the lunar calendar and can fall in late January or early to mid-February.

All undergraduate students study one semester at one of our partner universities



Acquire Mandarin Skills for Success : All international undergraduate students study Mandarin for 2+ years. Familiarity with Mandarin, the primary language of nearly 12% of the world population, is becoming increasingly important as the world becomes more interconnected. Our Mandarin classes will give you an edge as you pursue your career globally.



YSABELLA BARROSO
UNDERGRADUATE CLASS OF 2027, TEXAS, USA

When Westlake University came to my high school I knew I wanted to apply. I remember thinking this place ticks all of my boxes: It had my major, I was studying abroad in Asia, there is an additional exchange program so I could experience another country, and I could see that this university can provide me with a solid education with what I was learning.



CARSON CAMPBELL
UNDERGRADUATE CLASS OF 2027, ARIZONA, USA

My time at Westlake University has been amazing. Whether learning from outstanding teachers and professors or playing soccer with friends, this school has a lot to offer. I have no problem getting hands on experience in interesting fields or talking to subject matter experts about their research. Everyday I can find something new and exciting to learn and am very happy with the people I have met and the friends I have made here.



NICOLE BORJA
UNDERGRADUATE CLASS OF 2027, TEXAS, USA

My time at Westlake so far has been such a learning experience. Although there were bumps in the road, I was able to get through it. I honestly love how Westlake provides various events and encourages the students to get involved. It allowed me to open up, meet new people and experience different things, which was quite different from when I was in high school.



JOSHUA CEVEY
UNDERGRADUATE CLASS OF 2028, TEXAS, USA

University, to me, wasn't just about education, it was about preparation. I wanted a place that would equip me with the knowledge, resources, and problem-solving skills to thrive, and I found exactly what I needed at Westlake. With its strong STEM curriculum, focus on undergraduate research, and close-knit connections with doctoral students and PIs alike, Westlake has allowed me to pursue my passions in a truly impactful way, and I'm so excited to see what my future here holds. Westlake isn't for those seeking the ordinary—it's for those who crave challenge, growth, and an extraordinary academic experience.

CAMPUS LIFE



Students engage in diverse academic, cultural, and social activities on campus, fostering a dynamic community that supports personal growth and lifelong friendships.

Recital by Pianist Lang Lang



Performance by Sinfonia Rotterdam, Netherlands



Traditional Chinese Opera



Music Festival



Stand-up Paddle Boarding



Magic Cube Puzzle Games



Annual Coming of Age Ceremony



Student Soccer Team



Chinese Traditional Costume Show



Basketball Competition

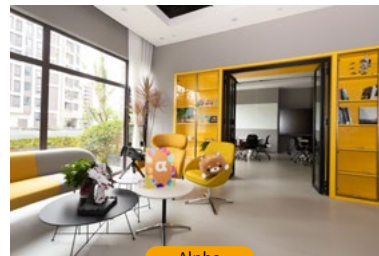
At Westlake, we recognize the importance of these activities and thus provide our students with a broad range of options, including outdoor pursuits, extracurricular lectures, and contests. Currently, Westlake boasts a diverse collection of 40 student groups, each catering to a unique set of interests and talents.

篮协 Basketball Club	乒乓球社 Table Tennis Club	攀岩社 Climbing Club	毅行社 Hiking Club	足协 Football Club
健身美协会 Fitness Club	跑团 Running Club	书法社 Calligraphy Club	舞蹈社 Dancing Club	羽毛球社 Badminton Club
西湖瑜伽社 Yoga Club	音乐社 Music Club	小动物保护协会 Animal Protection Club		棋牌电竞协会 Gaming Club
H.D. Crew 街舞社 H.D. Club	摄影视觉社 Photography Visual Association			电影沙龙社 Movie Salon Club
排球社 Volleyball Club	中医保健协会 Chinese Medicine Health Care Association	Sudo 合唱团 Sudo Choir	水上运动社 Aquatic Sports Club	太极拳社 Taijiquan Club
			手工社 Handcraft Club	

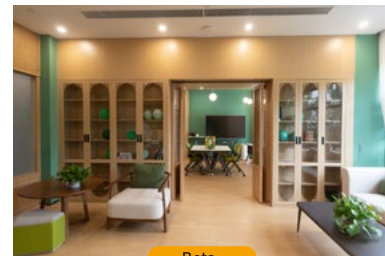


LIVE GROW THRIVE

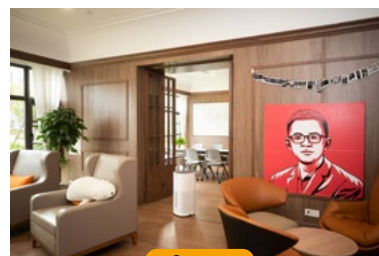
The Westlake Residential College system is a comprehensive support system that blends the tradition of Chinese academies with the practices of residential colleges worldwide to promote academic and personal growth.



Alpha



Beta



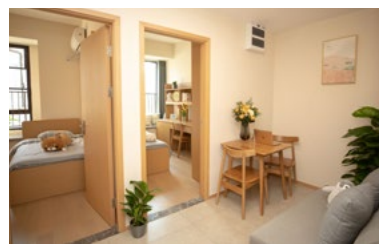
Gamma



Delta

All undergraduate students are housed in our brand-new on-campus dormitories:

- 4-5 air-conditioned bedrooms in one suite
- Shared bathroom and living room
- Washing machines and dryers are available



Home of Silk
Tradition meets craftsmanship



UNESCO World Heritage Sites
The West Lake ("Xi Hu")



UNESCO World Heritage Sites
Archaeological Ruins of
Liangzhu City



UNESCO World Heritage Sites
The Beijing-Hangzhou Grand Canal



Metropolitan Heart of Hangzhou
A Technology & Innovation Hub

This is!
HANGZHOU

NO.1

Chinese
Cities of
Opportunity

NO.1

2019 Best
Digital Cities
in China

NO.1

Forbes Best
Commercial
City

NO.2

2020
Happiest
Cities in China

NO.5

2018 Forbes
"Best Cities to
Relocate to"

NO.5

2021 Top 100
developing
cities in China

14
CONSECUTIVE
YEARS

The most
attractive
Chinese city
for foreign
professionals

Hangzhou is one of the greenest cities in China, with lush tea hills, sparkling river creeks, and romantic bamboo forests, and it is less than an hour away from the megacity of Shanghai by high-speed rail. In addition to adventurous outdoor activities and cultural experiences, Hangzhou also offers cosmopolitan nightlife, international culinary options, and glamorous shopping districts and skylines. Hangzhou has emerged as a symbol of openness and innovation, boasting some of Asia's largest technology startups.

Tea Culture of Hangzhou A blend of tradition and tranquility

WHAT ARE YOU WAITING FOR?

We're on Common App www.commonapp.org

APPLICATION DEADLINES (Fall 2026)

- FIRST ROUND ● NOVEMBER 1, 2025
- SECOND ROUND ● JANUARY 1, 2026
- THIRD ROUND ● APRIL 1, 2026

Applications may still be accepted on a rolling basis after April 1st

APPLICATION CHECKLIST

- ✓ Applicant information
- ✓ Official high school transcripts
- ✓ TOEFL, IELTS, Duolingo, or other proof of English proficiency for students whose first language is not English
- ✓ SAT/ACT/AP/A-Level/ IB test scores (optional)
- ✓ Two essays
- ✓ Three recommendation letters (one from high school counselor, two from teachers)
- ✓ In-person/Online Interview: By invitation

ASSESSMENT AND ADMISSIONS

The admissions decision is based on a holistic evaluation of the applicant. The Undergraduate Admissions Committee will review all application materials to gauge the applicant's fit for Westlake, followed by an in-person/online interview to assess the applicant's academic background, potential, English proficiency, communications skills, social responsibility, creativity, and character.

Application fee

\$75
(waiver available)

On-campus Housing

¥ 1,800-2,200/year
(approx. \$300/year)

Tuition

¥ 350,000/year
(approx. \$48,000/year)

Westlake maintains a need-blind admissions policy. Full and partial tuition scholarships based on both financial need and merit are available.

CONTACT US

YUNGU CAMPUS No. 600 Dunny Road, Sandun Town, Xihu District, Hangzhou Zhejiang, 310030, P.R. China

YUNQI CAMPUS No. 18 Shilongshan Road, Cloud Town, Xihu District, Hangzhou Zhejiang, 310024, P.R. China

 |  ugadmissions.westlake.edu.cn  [intl admissions@westlake.edu.cn](mailto:intladmissions@westlake.edu.cn)